



DESKTOP PILOT

PARKING BRAKE SETUP INSTRUCTIONS FOR MICROSOFT FLIGHT SIMULATOR 2024



1. Connect the Type B USB cable to the USB port located at the back of the Parking brake.



2. Next, plug the other end of the cable into the USB port of your computer or a USB hub.
3. Wait for your computer to detect the Parking Brake device.
4. Configure the device – IMPORTANT: **Ensure that no other active devices have the same functions assigned, as conflicting input signals from controllers will prevent normal operation.**

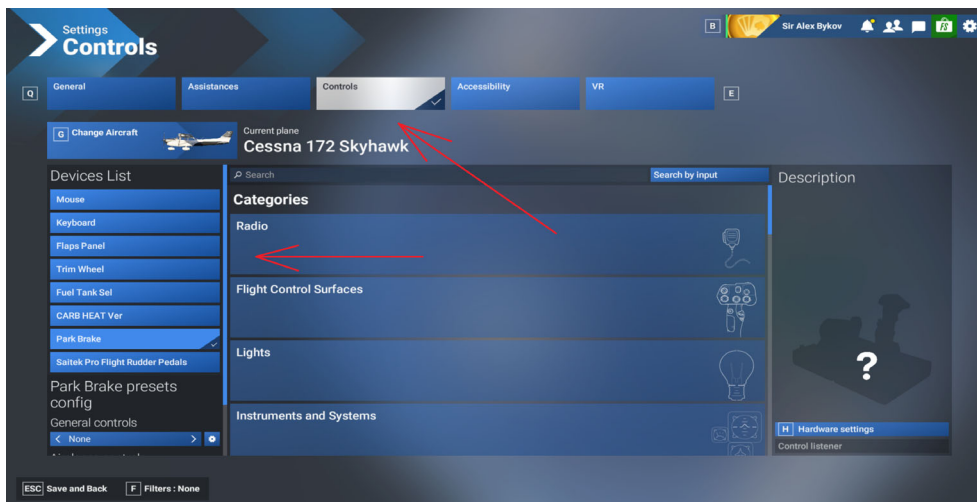
Microsoft Flight Simulator 2024

To configure Desktoppilot Parking Brake with MSFS2024, follow these steps:

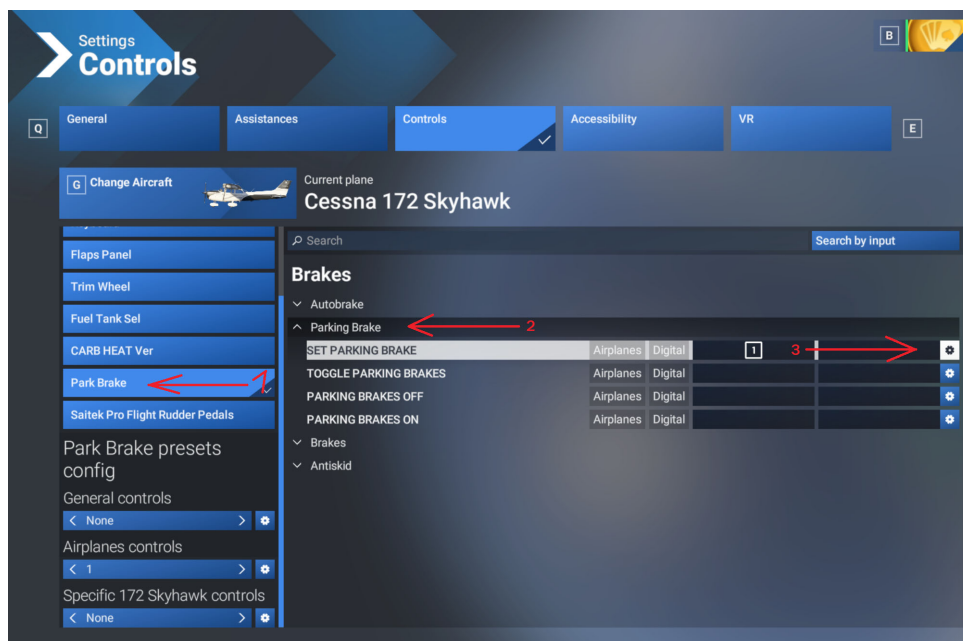
5. Launch Microsoft Flight Simulator 2024, from MAIN MENU navigate to the "SETTINGS" menu by clicking gear symbol in upper right corner:



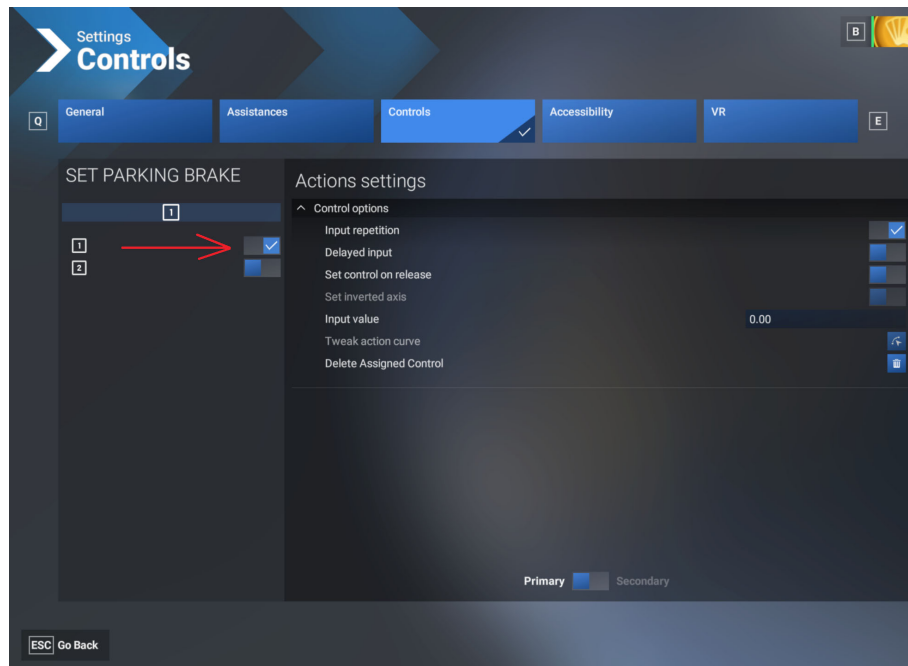
6. In “SETTINGS” menu click “CONTROLS” tab, then on the left side of a screen click on “PARK BRAKE” to begin configuring it:



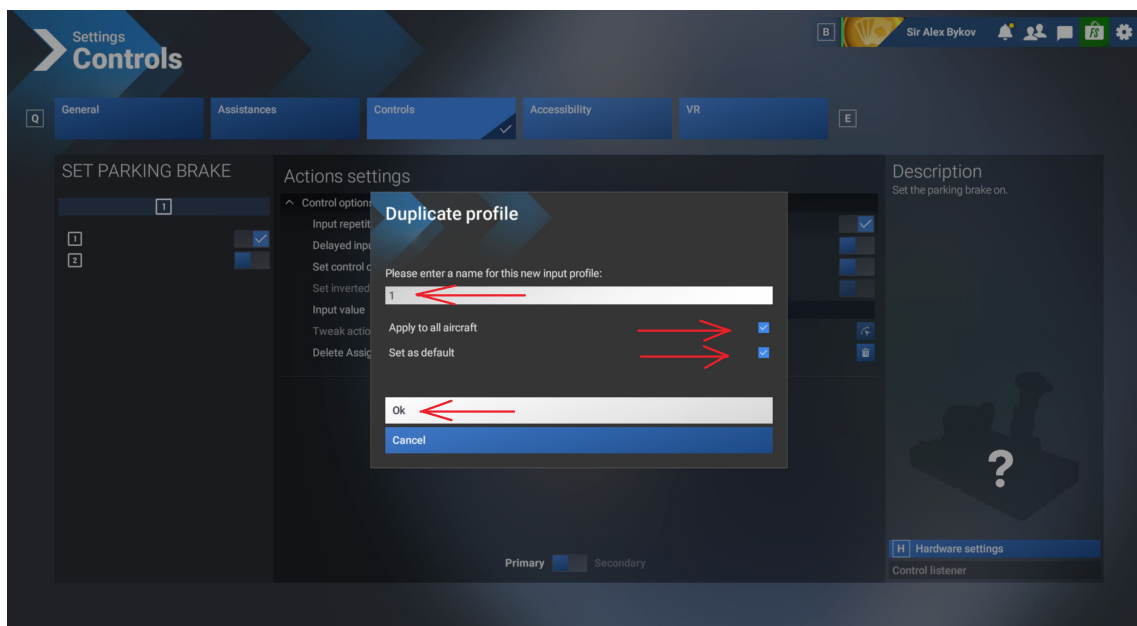
7. Once “PARK BRAKE” is selected go to “BRAKES” category, select “Parking Brake”, and find “SET PARKING BRAKE” - click gear symbol to the right:



8. On the left side of a screen - click on slider for button “1”:

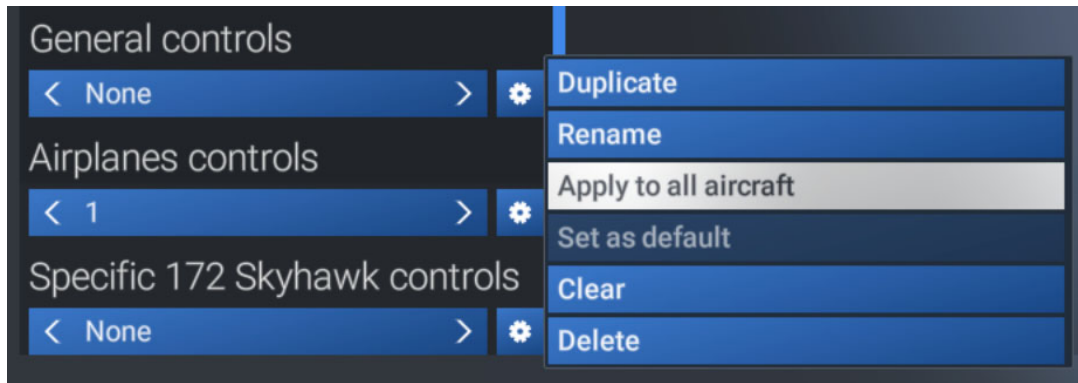


9. Once you attempt changing any settings MSFS2024 will request to enter a name for new input profile – name it, (here it’s “1”), it is recommended to check boxes “Apply to all aircraft” and “Set as Default”, then click “Ok” and on parking brake settings menu click “Save and back”



10. Last step:

After all above is set and done, on Settings main page – take a look to lower left corner – Make sure to set “General controls”, “Airplane controls” and “Specific 172 Skyhawk controls” as required, consider selecting “Apply to all aircraft” in order to use same settings flying other airplanes:



Congratulations! You have successfully set up the Parking brake! Happy flying!

In case you encounter any issues during setup, please reach out our customer support team via E-mail: Sales@desktoppilot.com or call +1-888-296-9150 Monday-Friday 10am-6pm EST for further assistance.