



DESKTOP PILOT

FUEL TANK SELECTOR SETUP INSTRUCTIONS FOR MICROSOFT FLIGHT SIMULATOR 2024



1. Connect the Type B USB cable to the USB port located at the back of the Fuel Tank Selector.

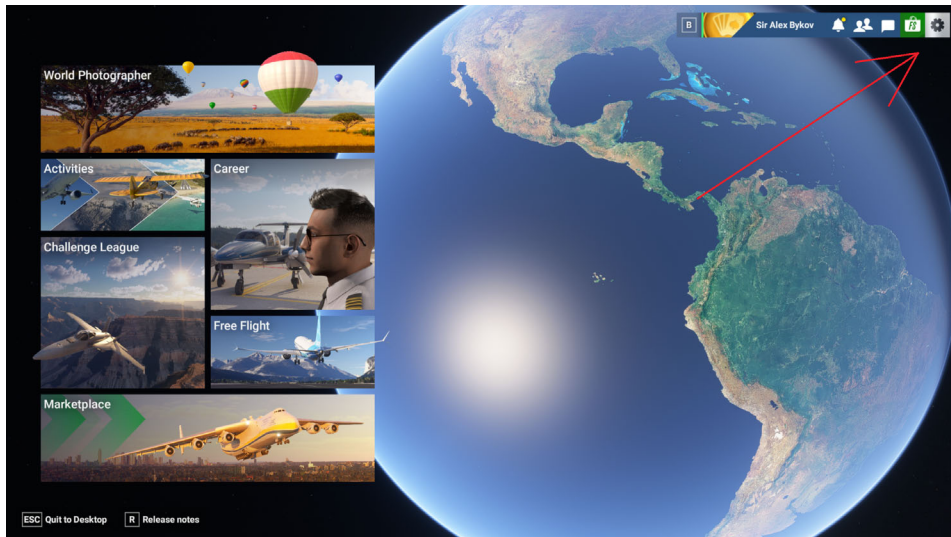


2. Next, plug the other end of the cable into the USB port of your computer or a USB hub.
3. Wait for your computer to detect the Fuel Tank Selector device.
4. Configure the device – IMPORTANT: **Ensure that no other active devices have the same functions assigned, as conflicting input signals from controllers will prevent normal operation.**

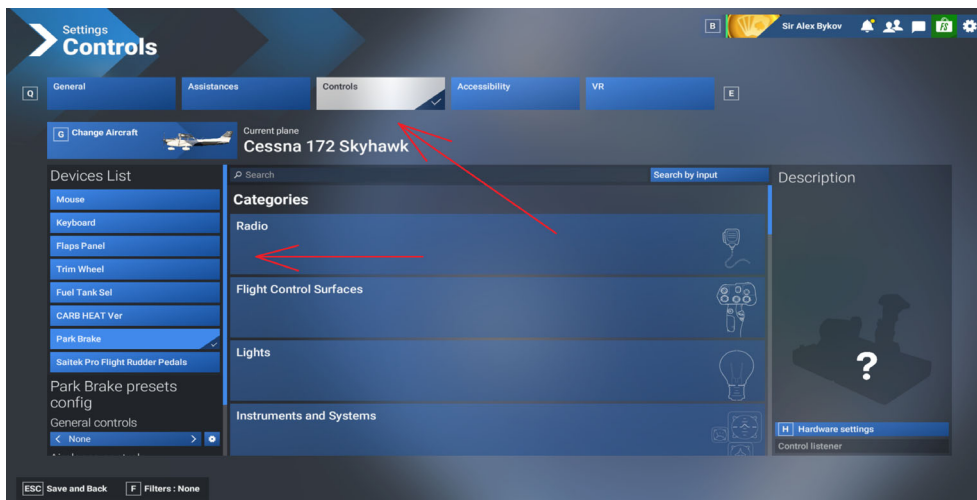
Microsoft Flight Simulator 2024

To configure Desktoppilot Fuel Tank Selector with MSFS2024, follow these steps:

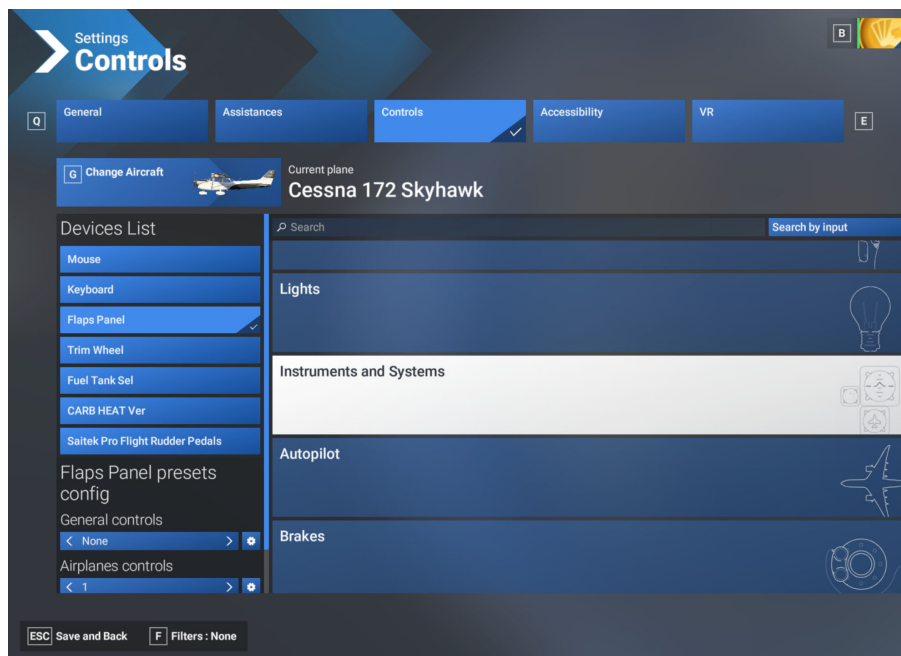
5. Launch Microsoft Flight Simulator 2024, from MAIN MENU navigate to the "SETTINGS" menu by clicking gear symbol in upper right corner:



6. In “SETTINGS” menu click “CONTROLS” tab, then on the left side of a screen click on “FUEL TANK SELECTOR” to begin configuring it:



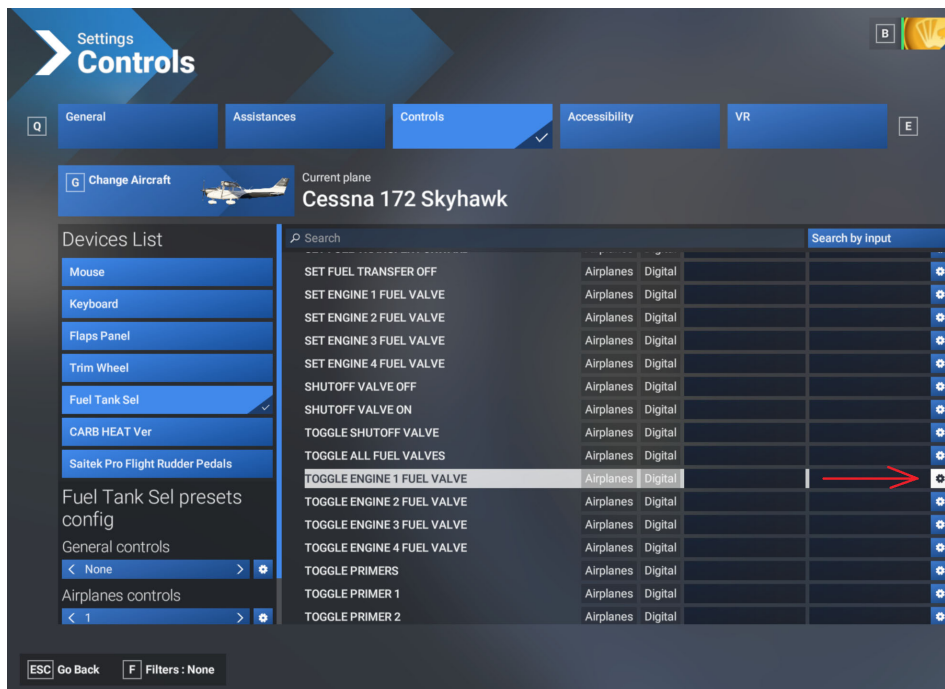
7. Once “FUEL TANK SELECTOR” is selected go to “INSTRUMENTS AND SYSTEMS” category:



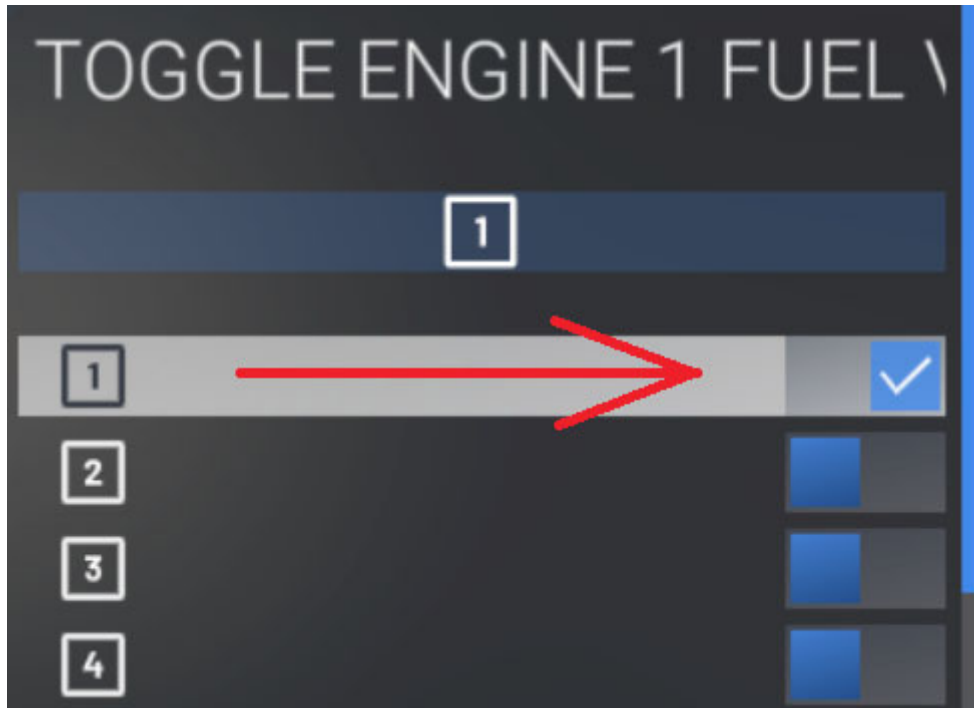
8. In “INSTRUMENTS AND SYSTEMS” select “FUEL”:



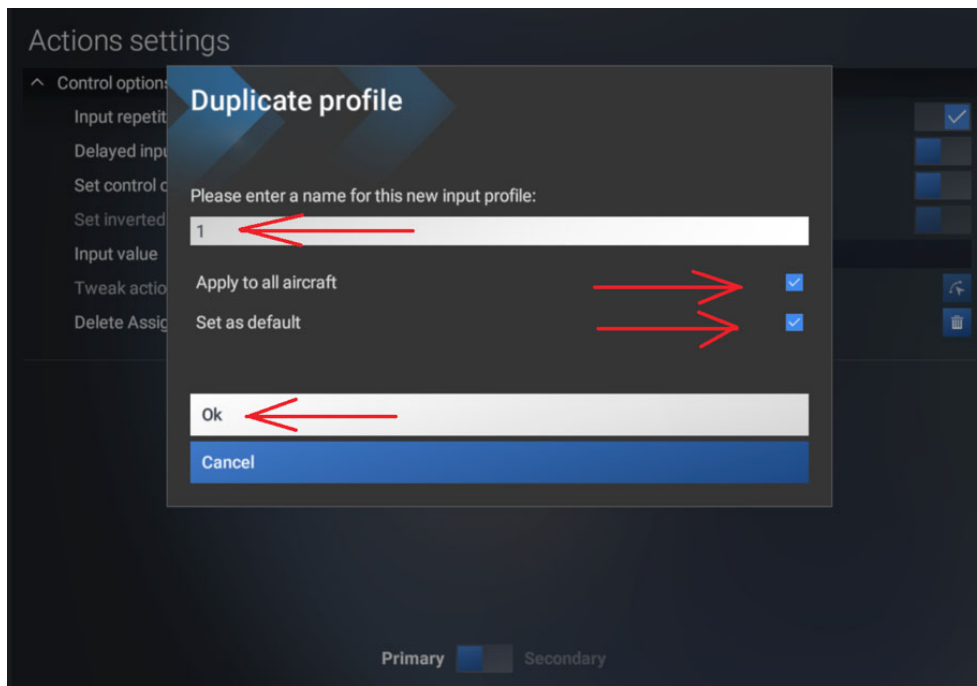
In “FUEL” subcategory find (or type in “Search” bar) - “TOGGLE ENGINE 1 FUEL VALVE” - click gear symbol to the right:



On the left side of this menu - click on slider for button “1”:



9. Once you attempt changing any settings MSFS2024 will request to enter a name for new input profile – name it, (here it’s “1”), you might want to check boxes “Apply to all aircraft” and “Set as Default”, then click “Ok”.



Now return to “INSTRUMENTS AND SYSTEMS” select “FUEL”, and set Fuel Tank Selector as described below (you can either find commands in list or use “Search” bar):

“TOGGLE ENGINE 1 FUEL VALVE” - click gear symbol to the right, click on slider for button “1”

“FUEL SELECTOR 1 ALL” - click gear symbol to the right and click on slider for button “3”

“FUEL SELECTOR 1 LEFT” - click gear symbol to the right and click on slider for button “2”

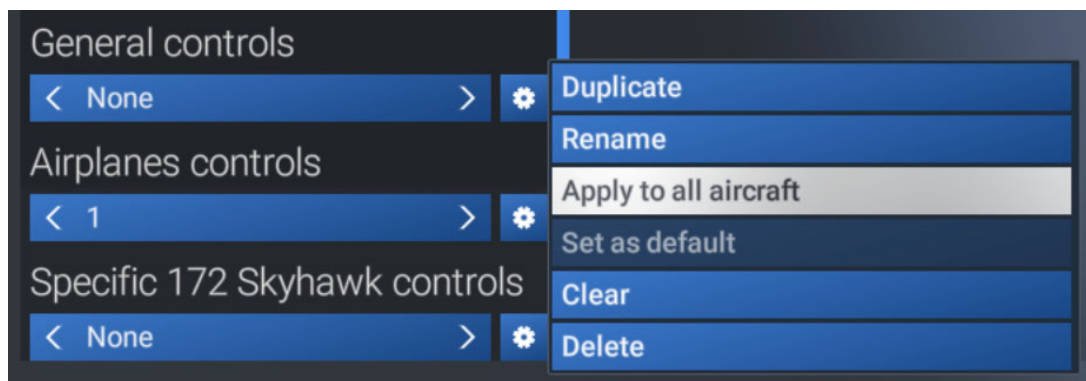
“FUEL SELECTOR 1 RIGHT” - click gear symbol to the right and click on slider for button “4”

When you’re done it should look like this:



10. Last step:

After all above is set and done, on Settings main page – take a look to lower left corner – Make sure to set “General controls”, “Airplane controls” and “Specific 172 Skyhawk controls” as required, consider selecting “Apply to all aircraft” in order to use same settings flying other airplanes:



11. Now click “Go Back” and in main settings menu - “Save and back” and you’re ready to go!

Congratulations! You have successfully set up the FUEL TANK SELECTOR! Happy flying!

In case you encounter any issues during setup, please reach out our customer support team via E-mail: Sales@desktoppilot.com or call +1-888-296-9150 Monday-Friday 10am-6pm EST for further assistance.