



DESKTOP PILOT

CARB HEAT THROTTLE QUADRANT SETUP INSTRUCTIONS FOR MICROSOFT FLIGHT SIMULATOR 2024



1. Connect the Type B USB cable to the USB port located at the back of the Carb Heat Throttle Quadrant:

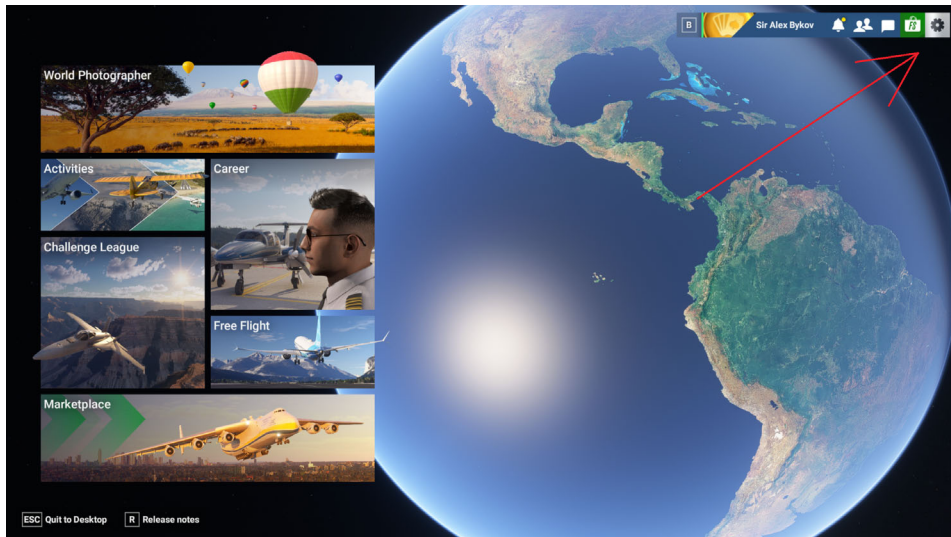


2. Next, plug the other end of the cable into the USB port of your computer or a USB hub.
3. Wait for your computer to detect the Carb Heat Throttle Quadrant.
4. Configure the device – **IMPORTANT: Ensure that no other active devices have the same functions assigned, as conflicting input signals from controllers will prevent normal operation.**

Microsoft Flight Simulator 2024

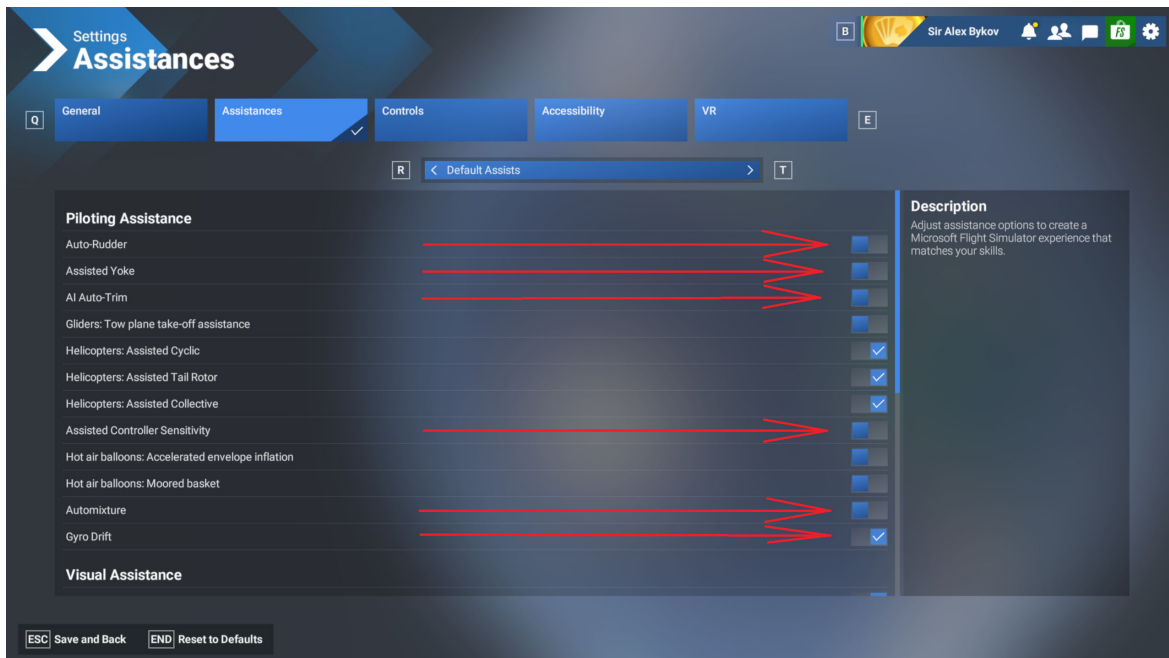
To configure Desktoppilot Carb Heat Throttle Quadrant with MSFS2024, follow these steps:

5. Launch Microsoft Flight Simulator 2024, from MAIN MENU navigate to the "SETTINGS" menu by clicking gear symbol in upper right corner:



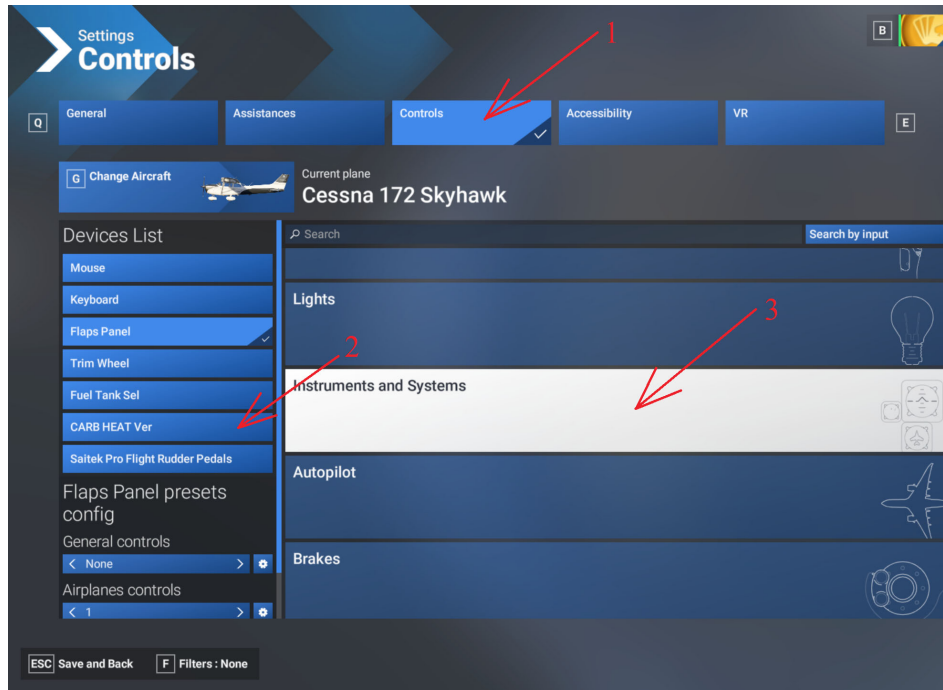
6. In “SETTINGS” menu click “ASSISTANCES” tab and turn off “Assisted Controller Sensitivity” and “Automixture”, consider turning off other assistance options for inputs which you, The Pilot, will use controllers for (such as yoke, rudder pedals, throttle box, trim wheel etc.):

(you can leave Gyro Drift on)

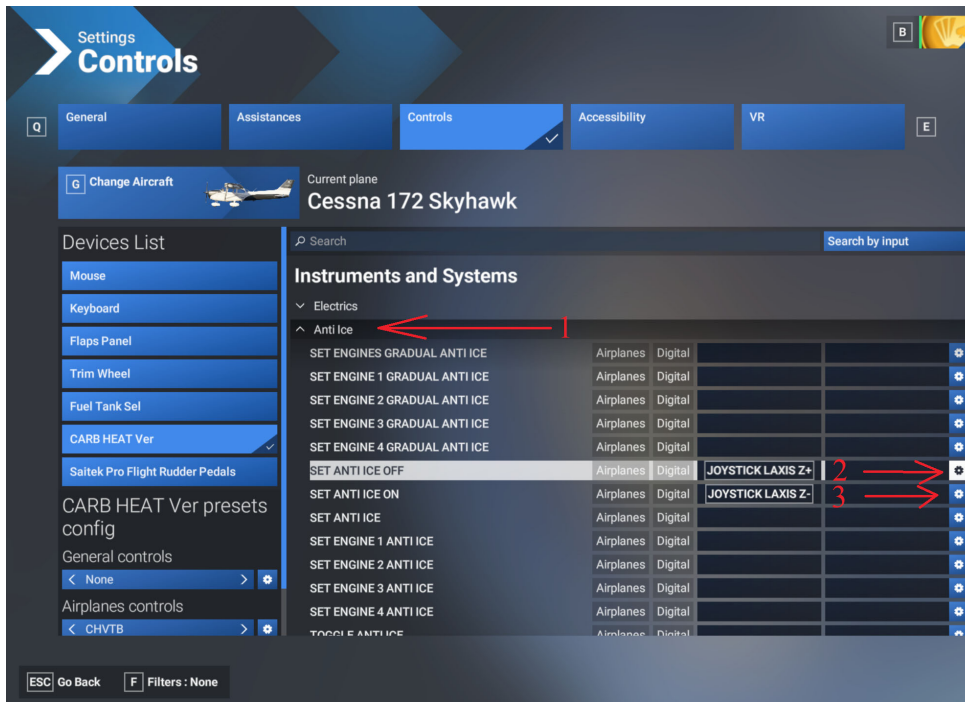


When that's done click “CONTROLS” tab

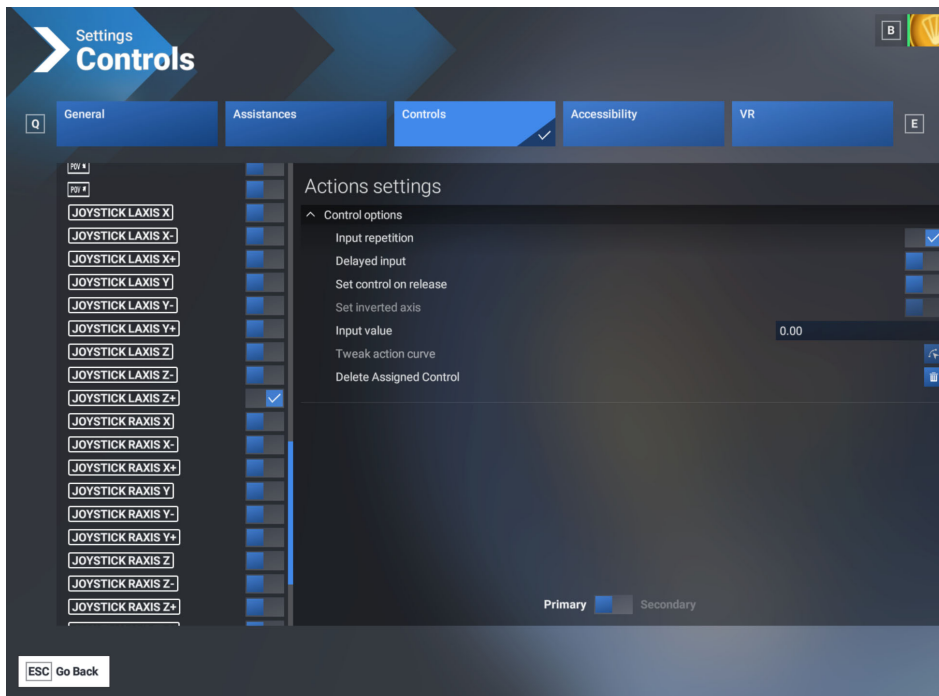
7. In “SETTINGS” menu click “CONTROLS” tab, then on the left side of a screen click on “CARB HEAT THROTTLE QUADRANT” to begin configuring it, then go to “INSTRUMENTS AND SYSTEMS” category:



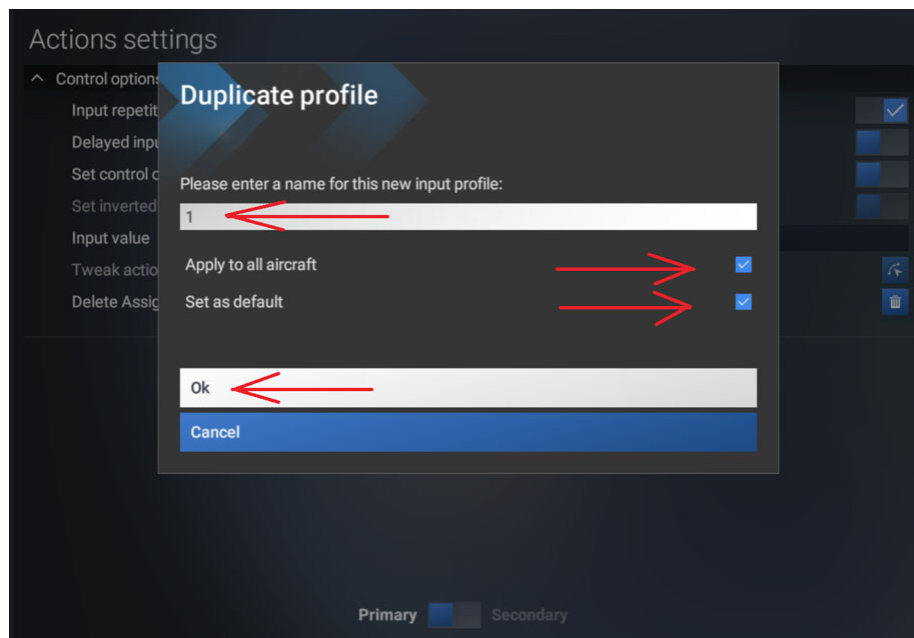
8. In “INSTRUMENTS AND SYSTEMS” select “Anti Ice” and find command “SET ANTI ICE OFF” either from the list of commands or using “Search” bar, click on a gear symbol to the right:



9. In this menu find “**JOYSTICK L AXIS Z+**” and click on slider next to it:

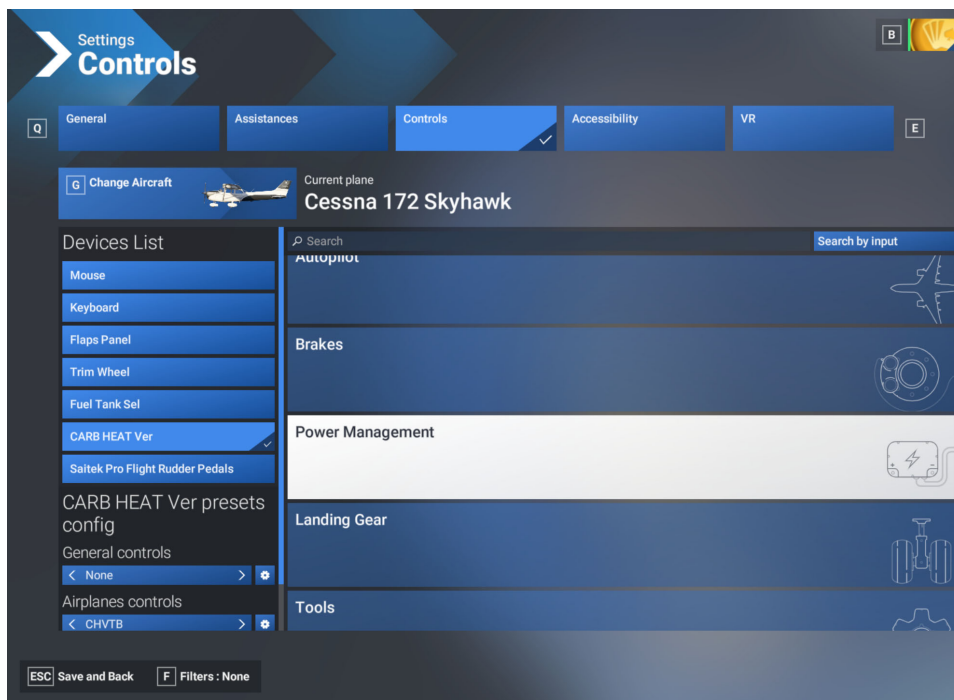


10. Once you attempt changing any settings MSFS2024 will request to enter a name for a new input profile – name it, (here it’s “1”), you might want to check boxes “Apply to all aircraft” and “Set as Default”, then click “Ok”.

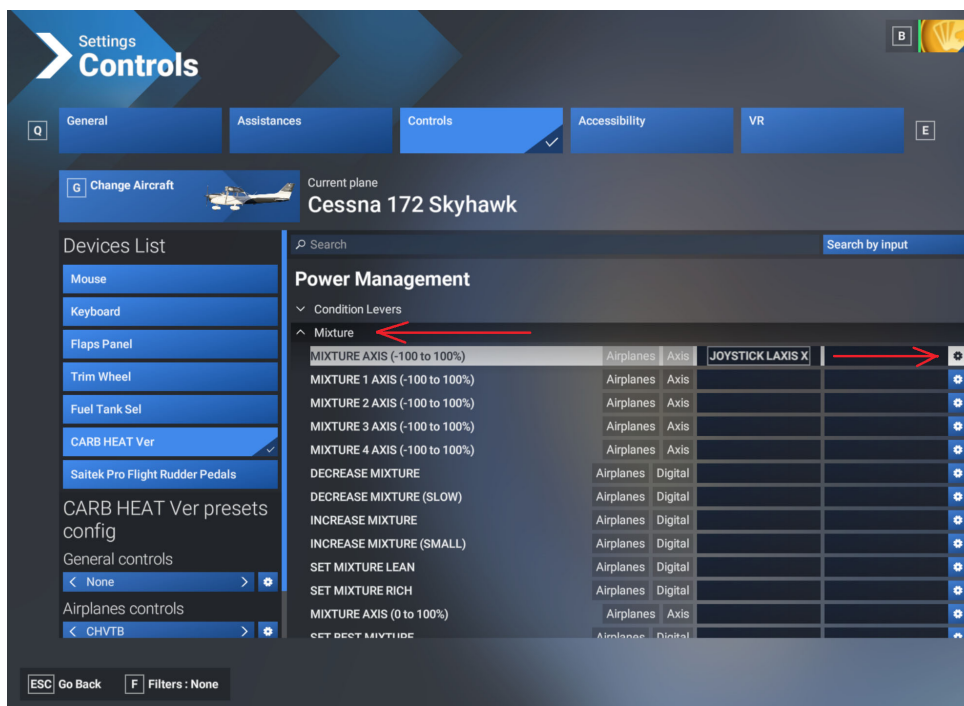


Now click “Go back” in Left lower corner, find command “**SET ANTI ICE ON**” either from the list of commands or using “Search” bar, click on a gear symbol to the right, find “**JOYSTICK L AXIS Z-**” and click on slider next to it, Then click “Go Back”

11. In “CONTROLS” menu click on “POWER MANAGEMENT” category:



12. In “POWER MANAGEMENT” select “Mixture”, find command “MIXTURE AXIS (-100 TO 100%)” either from the list of commands or using “Search” bar, click on a gear symbol to the right, find “JOYSTICK L AXIS X” and click on slider next to it:



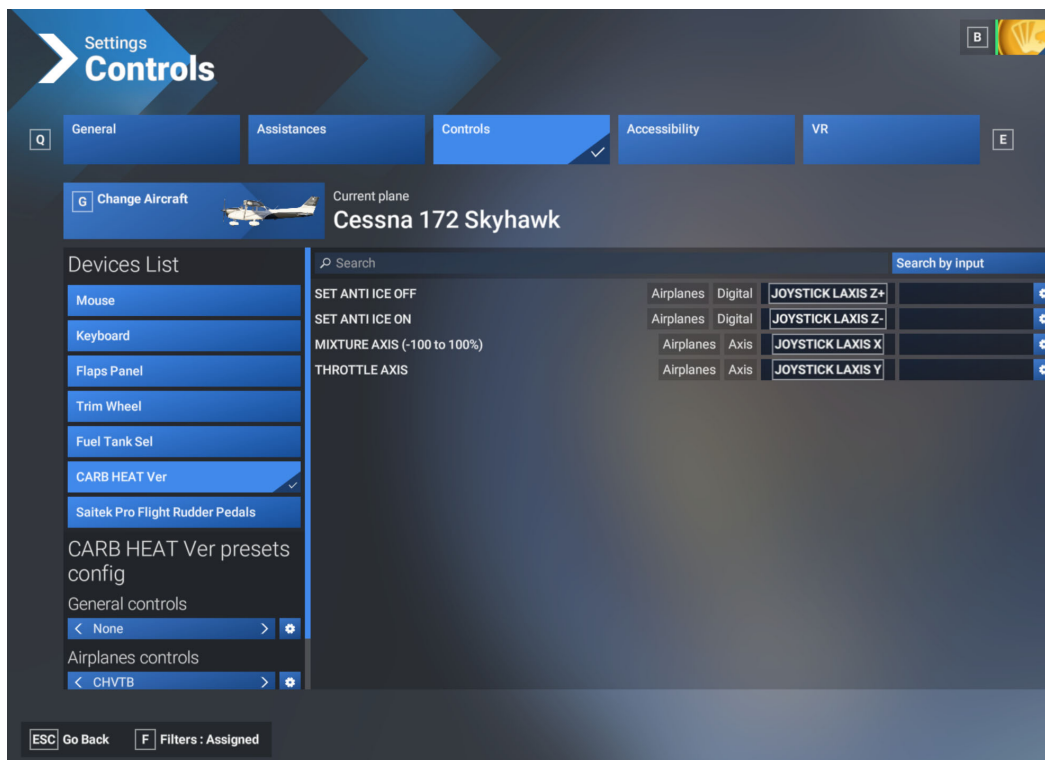
Then click “Go Back”

13. In “POWER MANAGEMENT” select “Throttle”, find command “**THROTTLE AXIS**” either from the list of commands or using “Search” bar, then click on a gear symbol to the right, find “**JOYSTICK L AXIS Y**” and click on slider next to it,

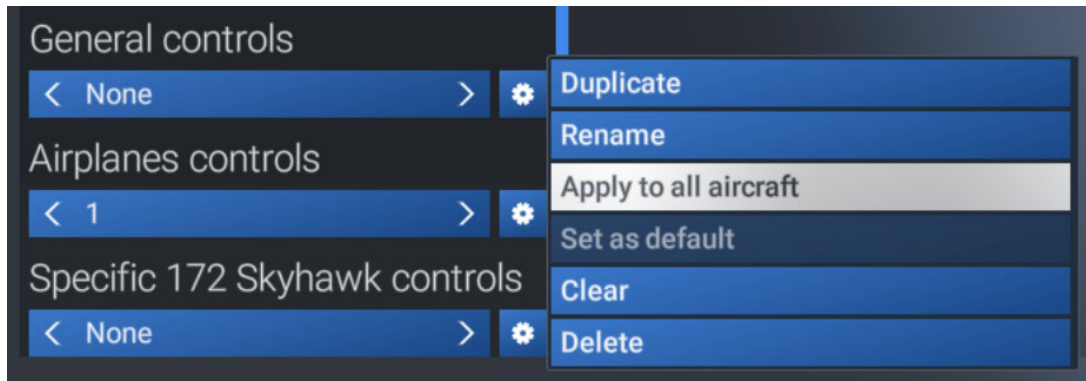


Then click “Go Back”,

All axis are assigned at this point, and if you click on “FILTERS” in left lower corner and select “Assigned” your Carb Heat Throttle Quadrant assignments should look like this:



14. Last step: After all above is set and done, on Settings main page – take a look to lower left corner – Make sure to set “General controls”, “Airplane controls” and “Specific 172 Skyhawk controls” as required, consider selecting “Apply to all aircraft” in order to use same settings flying other airplanes:



15. Now click “Go Back” and in main settings menu - “Save and back” and you’re ready to go!

Congratulations! You have successfully set up the CARB HEAT THROTTLE QUADRANT!
Happy flying!

In case you encounter any issues during setup, please reach out our customer support team via E-mail: Sales@desktoppilot.com or call +1-888-296-9150 Monday-Friday 10am-6pm EST for further assistance.