



## DESKTOP PILOT

### IP-02 - IGNITION PANEL SETUP INSTRUCTIONS FOR MICROSOFT FLIGHT SIMULATOR 2024



1. Connect the Type B USB cable to the USB port located at the back of the Ignition Panel.



2. Next, plug the other end of the cable into the USB port of your computer or a USB hub.
3. Wait for your computer to detect the Ignition Panel device.
4. Configure the device – IMPORTANT: **Ensure that no other active devices have the same functions assigned, as conflicting input signals from controllers will prevent normal operation.**

### Microsoft Flight Simulator 2024

To configure Desktop Pilot's Ignition Panel with MSFS2020, follow these steps:

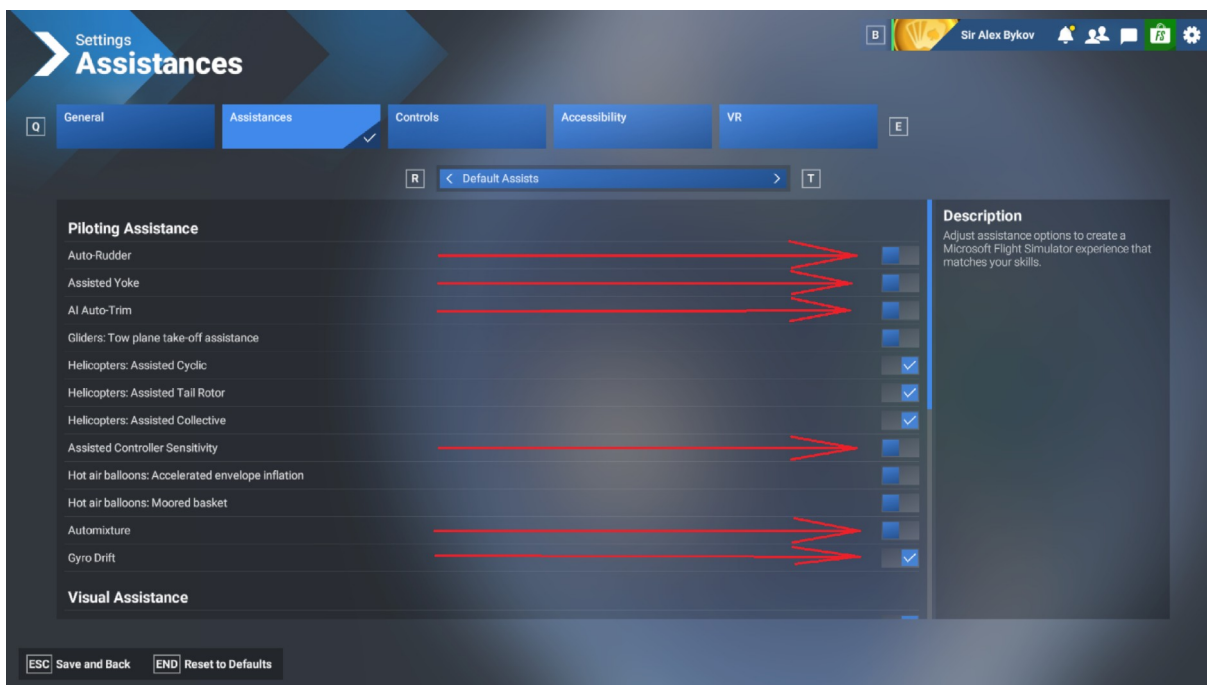
5. Launch Microsoft Flight Simulator.

6. Navigate to the "SETTINGS" options menu, by clicking gear symbol in upper right corner:



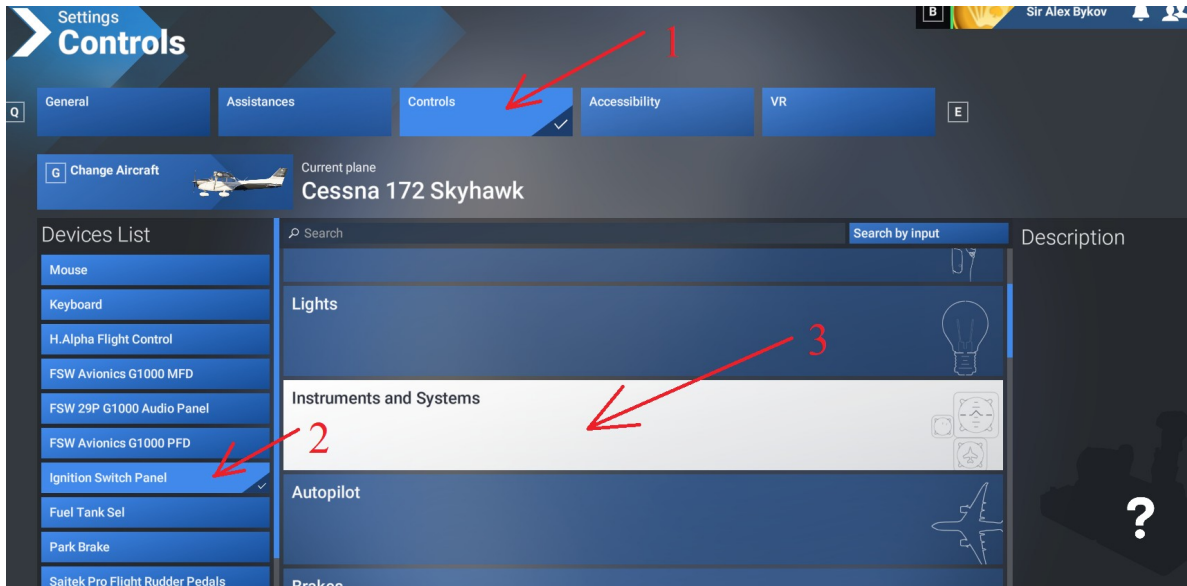
7. In "SETTINGS" menu click "ASSISTANCES" tab and turn off unnecessary features, consider turning off other assistance options for inputs which you, The Pilot, will use controllers for (such as yoke, rudder pedals, throttle box, trim wheel etc.):

(you can leave Gyro Drift on)



When that's done click "CONTROLS" tab

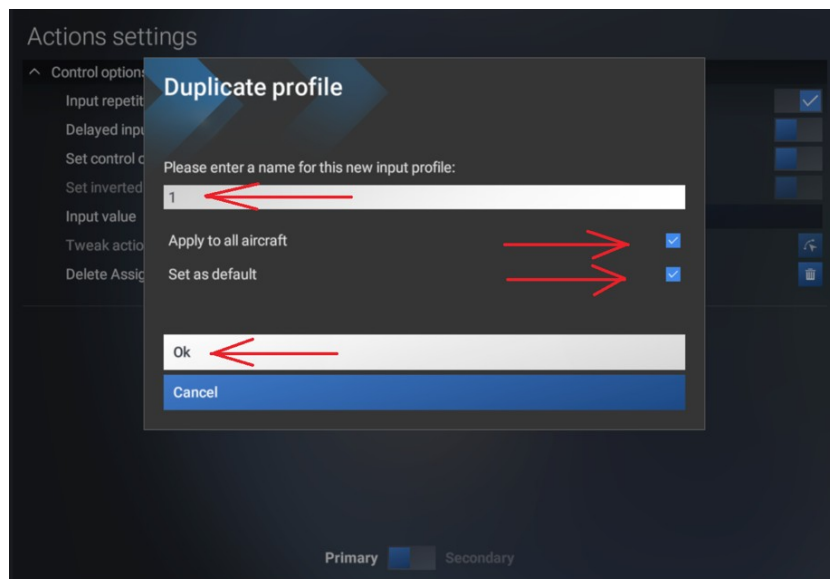
8. In “SETTINGS” menu click “CONTROLS” tab, then on the left side of a screen click on “IGNITION SWITCH PANEL” to begin configuring it, then go to “INSTRUMENTS AND SYSTEMS” category:



9. Under “INSTRUMENTS AND SYSTEMS” select “FLIGHT INSTRUMENTS” subcategory, Scroll down to find OR – use “Search” bar – type and select:

- “AVIONICS MASTER 1 OFF” click on a gear symbol to the right and click on a slider next to button “25”

10. Once you attempt changing any settings MSFS2024 will request to enter a name for a new input profile – name it, (here it’s “1”), you might want to check boxes “Apply to all aircraft” and “Set as Default”, then click “Ok”.



11. Return to “FLIGHT INSTRUMENTS” subcategory, scroll down to find OR – use “Search” bar – type and select:

- "ELECTRICAL BUS 1 TO AVIONICS BUS 1 **OFF**" click on a gear symbol to the right and click on a slider next to button "25"
- "ELECTRICAL BUS 1 TO AVIONICS BUS 1 **ON**" click on a gear symbol to the right and click on a slider next to button "24"
- "ELECTRICAL BUS 2 TO AVIONICS BUS 2 **OFF**" click on a gear symbol to the right and click on a slider next to button "27"
- "ELECTRICAL BUS 2 TO AVIONICS BUS 2 **ON**" click on a gear symbol to the right and click on a slider next to button "26"

12. Under “INSTRUMENTS AND SYSTEMS”, select the “ELECTRICS” option. Scroll down to find OR – use “Search” bar – type and select::

- “SET MASTER BATTERY” and apply “**8**”
- “FUEL PUMP 1 ON” and apply “10” - use “Search” bar
- “FUEL PUMP 1 OFF” and apply “11” - use “Search” bar
- “SET ALTERNATOR” and apply “**6**”

13. Under “INSTRUMENTS AND SYSTEMS”, select the “ANTI ICE” option. Scroll down to find:

- “SET PITOT HEAT” and apply “**22**”

14. Under instruments and systems, select the “ENGINE INSTRUMENTS” option. Scroll down to find:

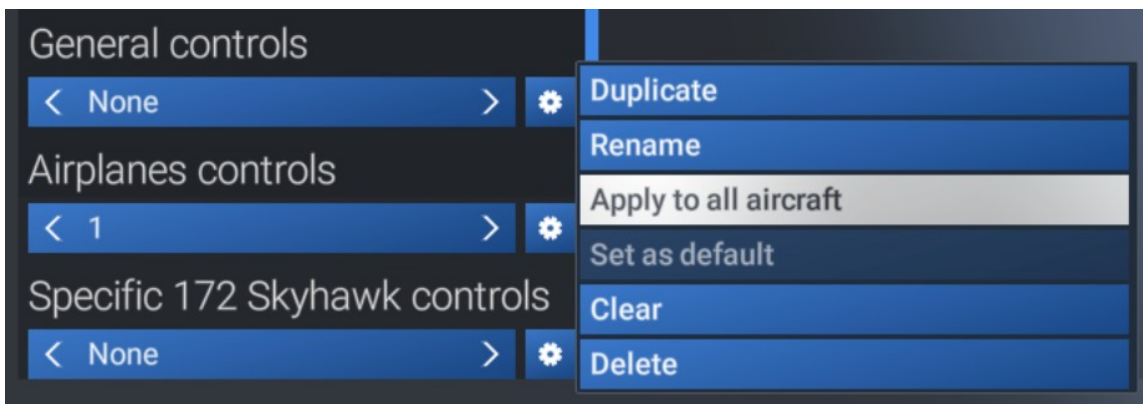
- “MAGNETOS START” and apply “**5**”
- “MAGNETOS RIGHT” and apply “**2**”
- “MAGNETOS OFF” and apply “**1**”
- “MAGNETOS LEFT” and apply “**3**”
- “MAGNETOS BOTH” and apply “**4**”

15. Go to “LIGHTS” category, select the “EXTERIOR LIGHTS” option, Scroll down and assign:

- “SET TAXI LIGHTS” and apply “**16**”
- “SET STROBES” and apply “**20**”
- “SET NAV LIGHTS” and apply “**18**”
- “SET LANDING LIGHTS” and apply “**14**”
- “SET BEACON LIGHTS” and apply “**12**”

All commands are assigned at this point, and if you click on “FILTERS” in left lower corner and select “Assigned” your IGNITION PANEL assignments should look like this:

16. Last step: After all above is set and done, on Settings main page – take a look to lower left corner – Make sure to set “General controls”, “Airplane controls” and “Specific 172 Skyhawk controls” as required, consider selecting “Apply to all aircraft” in order to use same settings flying other airplanes:



17. Now click “Go Back” and in main settings menu - “Save and back” and you’re ready to go!

Congratulations! You have successfully set up the Ignition Panel! Happy flying!

*In case you encounter any issues during setup, please reach out our customer support team via E-mail: [Sales@desktoppilot.com](mailto:Sales@desktoppilot.com) or call +1-888-296-9150 Monday-Saturday 10am-6pm EST for further assistance.*